



enviroform

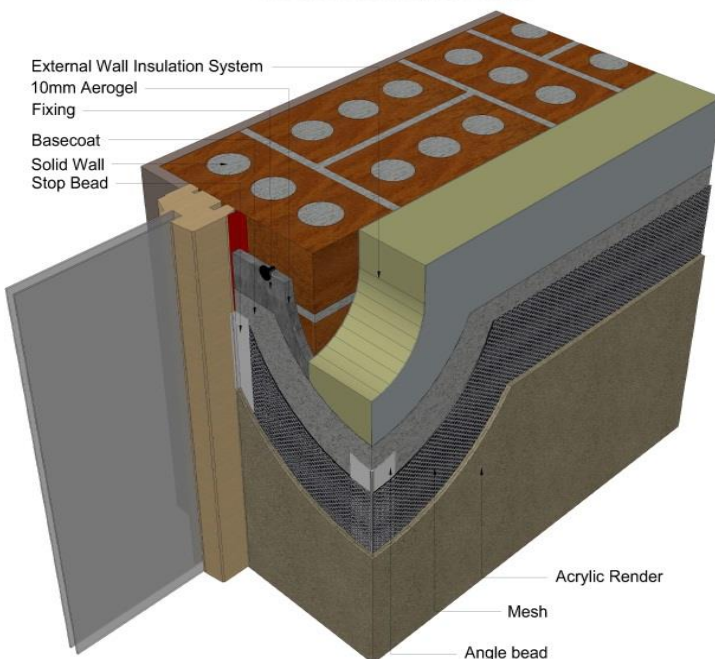
THERMOBEAD

DESCRIPTION

Thermo-Bead is a fast, cost effective and ultra-thin solution to deal with the cold bridging at external window reveals.

Thermo-Bead comprises of standard beads insulated with 10mm of Aerogel insulation and integrates seamlessly into all existing EWI systems leaving a finished depth of just 17mm.

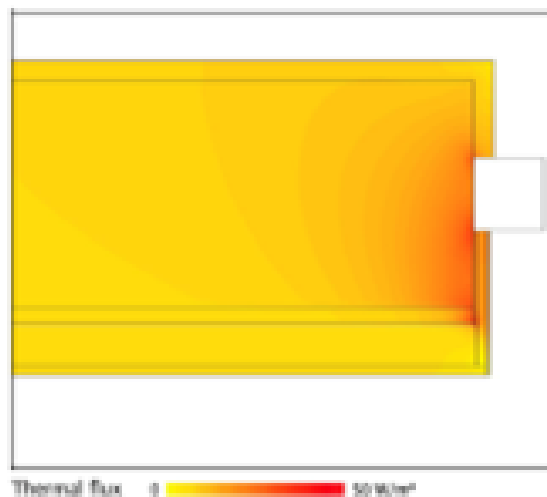
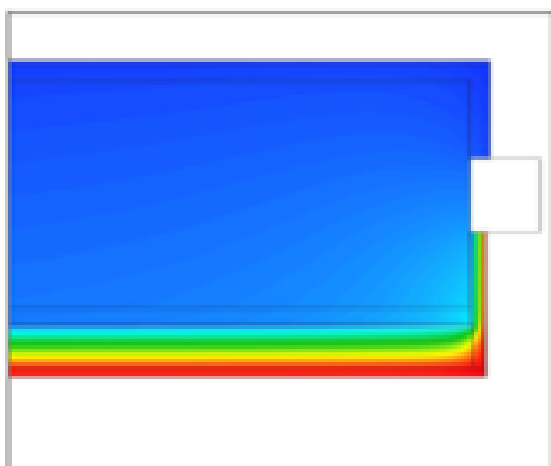
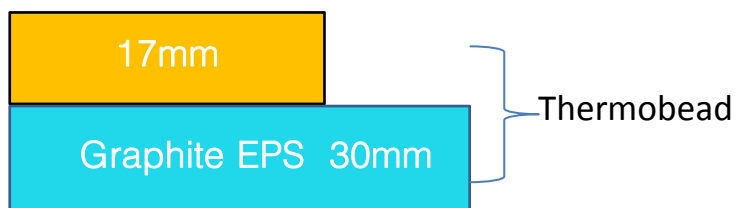
THERMOBEAD
EXTERNAL WALL INSULATION



KEY ADVANTAGES

Using Thermo-Bead with 10mm of Aerogel insulation provides the same thermal resistance as 23mm of Graphite EPS saving 13mm of valuable space for window and door openings.

- Thermo-Bead 10mm + 7mm Coating = 17mm
- Graphite EPS 23mm + 7mm Coating = 30mm



Thermal flux 0 50W/m²